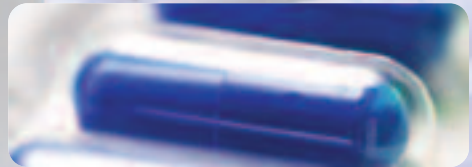
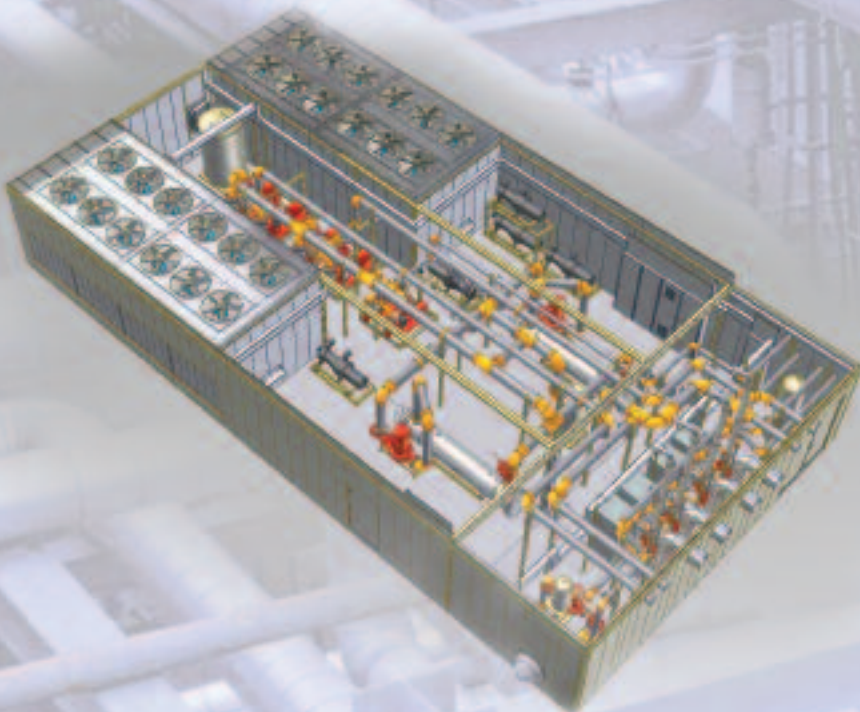
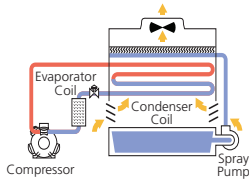


integrated *Prefabricated*
Equipment Center – iPEC™

With Evaporative-Cooled
Condenser Chiller Systems



Custom-Engineered Evaporative-Cooled Condenser Chiller Systems



We understand that energy usage by the air-conditioning system can be the single largest operating cost for a building

owner. That is why Mammoth-WEBCO provides innovative, custom-engineered solutions like evaporative-cooled condenser chiller systems. Payback periods of less than two years is not uncommon. We pioneered and patented the concept more than 50 years ago and, since then, have helped thousands of building owners with efficient, cost-effective, and low-maintenance chiller packages.

Challenges

- Reduce HVAC energy costs
- Limited space for chiller installation
- Limited electrical service to chiller
- Reduce design time and field construction time and costs

Recommendation

- Specify custom-engineered Mammoth® iPEC™ with evaporative-cooled condenser chillers

Benefits

- Chiller energy usage reduced by 20–40 percent depending on location
- Compact footprint saves on valuable real estate
- Factory prefabricated equipment reduces construction cycle and leads to faster building occupancy
- Single-source responsibility—factory assembled chiller system complete with pumps, piping, and controls

- For retrofit applications, you may be able to increase tonnage with the same or less building electrical-service needs.
- Condensing temperature is lower than for air-cooled condenser chiller, which improves reliability and reduces energy usage.
- Evaporative-cooled chillers are extremely suitable for retrofit projects. Available inside an iPEC or as a standalone chiller.
- Each chiller is assembled and fully-tested at our factory, reducing field labor costs for installation and increasing system reliability.
- Can easily provide 20°F glycol/water solutions.



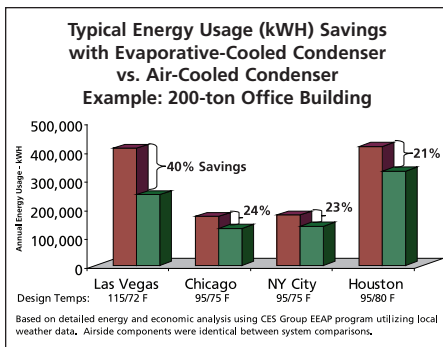
iPEC with integrated evaporative-cooled condenser chiller, pumps, piping, and controls

Reasons for Considering Evaporative-Cooled Chiller Systems

- Capacities from 50 to 1,000+ tons.
- Depending on climate, up to 40 percent less compressor energy to operate than an air-cooled condenser chiller.
- Up to 50 percent smaller footprint than a comparable air-cooled condenser chiller because it requires less coil surface area and moves less air.
- Quieter than comparable air-cooled chillers because it moves less air and uses noise-abating construction. Other low-sound options include double-wall cabinet, condenser-fan silencers, and variable-speed condenser fans.
- Waterside economizer option provides free-cooling during mild temperatures.



Packaged rooftop DX air-handler with integrated evaporative-cooled condenser chiller, pumps, piping, and controls



Custom designs—performance without compromise. That is the power of a custom-engineered solution provider. Contact a CES Group representative to learn more about our evaporative-cooled chiller solutions.



www.mammothwebco.com
info@mammothwebco.com

Mammoth-WEBCO, Inc. has a policy of continuous product improvement and reserves the right to change design and specifications without notice. Mammoth-WEBCO, Inc. is a CES Group™ Company.

©2009 Mammoth-WEBCO, Inc.
MAMM-ECC-SS-1
FEB 2009 supersedes 0906